

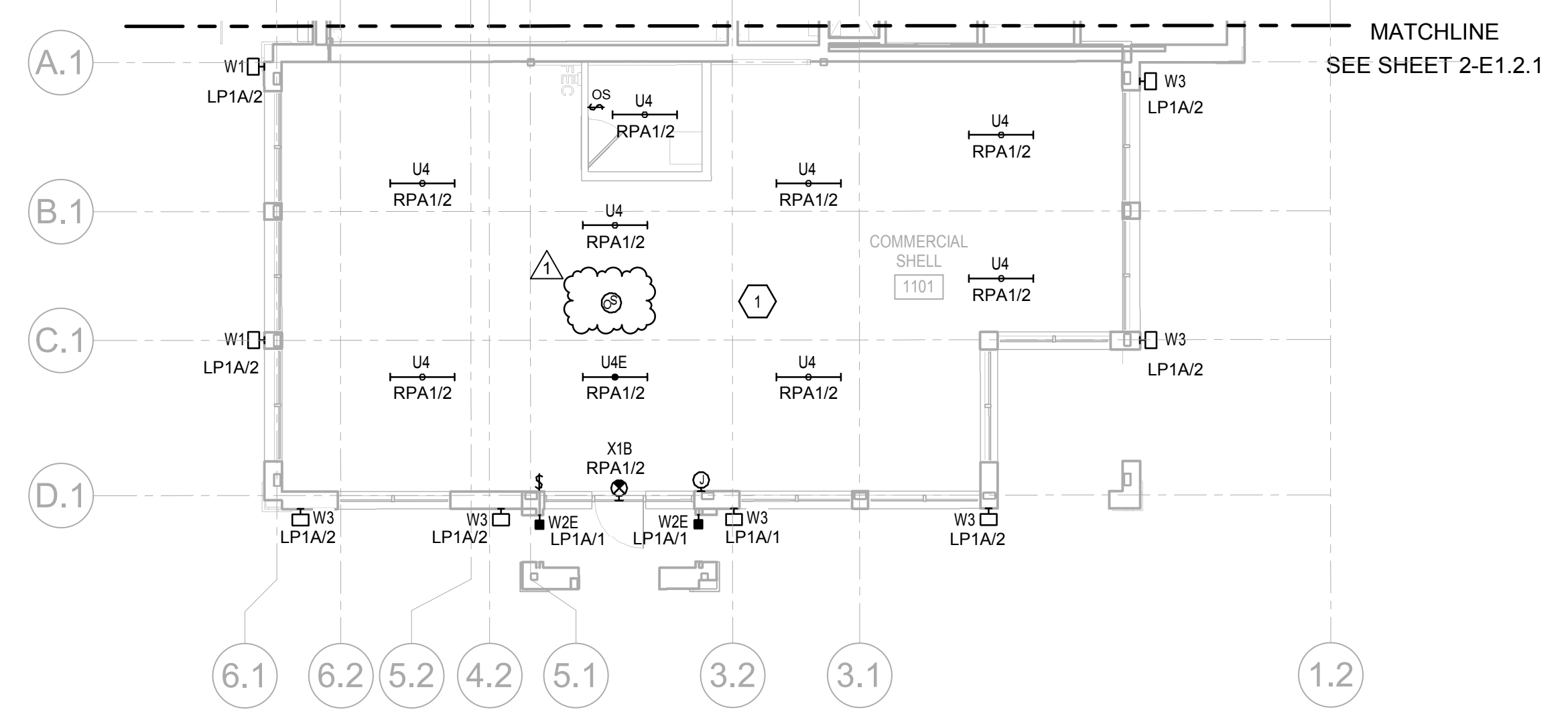


GENERAL NOTES - LIGHTING:

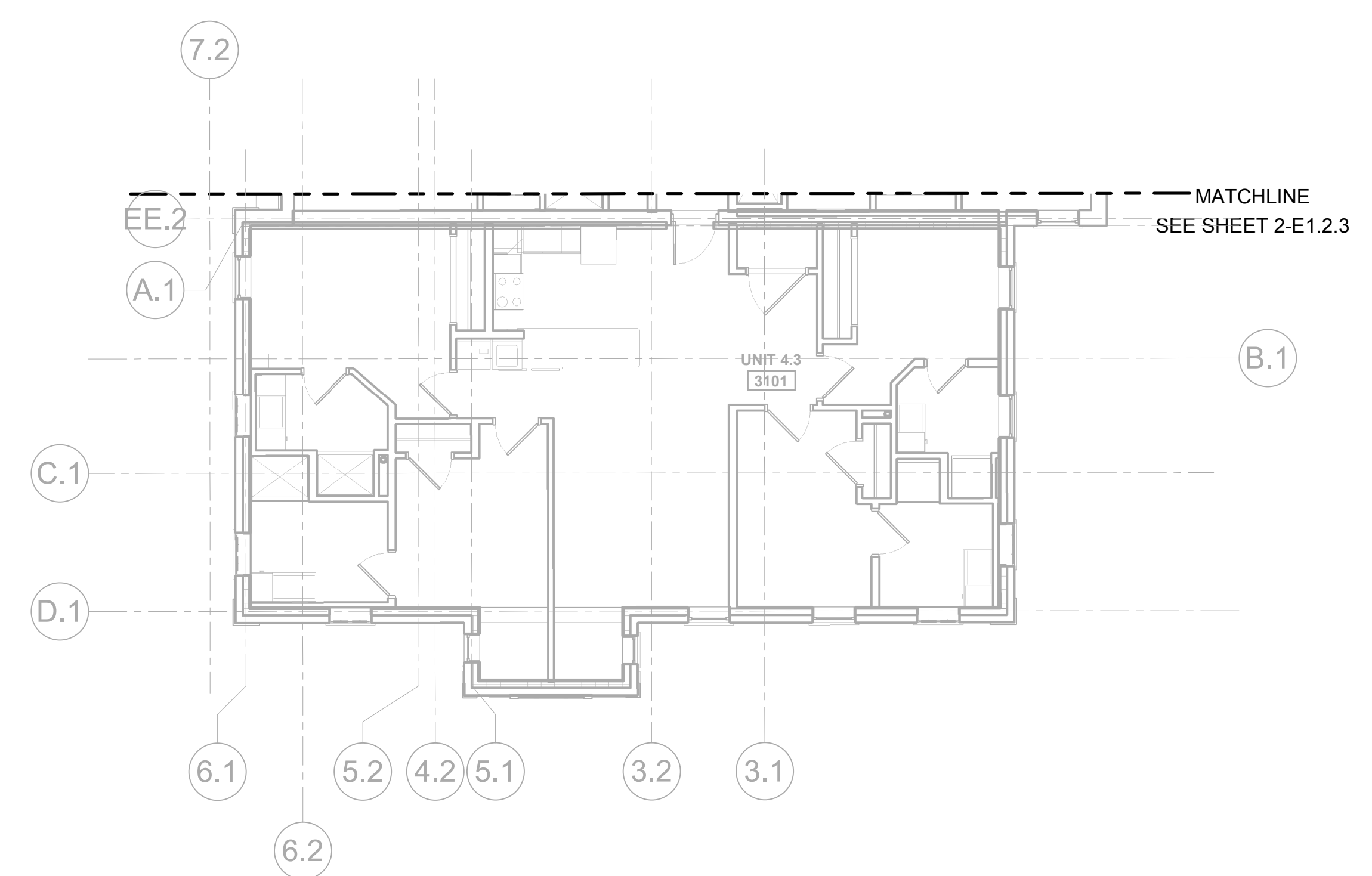
- A. SEE SHEET E1.0 FOR ADDITIONAL GENERAL NOTES, LUMINAIRE SCHEDULE, AND OCCUPANCY SENSOR SCHEDULE.
- B. COORDINATE LUMINAIRE PLACEMENT WITH ARCHITECTURAL PLANS AND OTHER TRADES.
- C. COORDINATE LUMINAIRE TYPE AND ACCESSORIES FOR INSTALLATION IN CEILING TYPES SHOWN ON ARCHITECTURAL REFLECTED CEILING PLANS.
- D. LUMINAIRES SHALL BE CONTROLLED BY SWITCHES SHOWN IN EACH SPACE AND CONNECTED TO LIGHTING PANELS WITH THE REQUIRED QUANTITY OF WIRES FOR PROPER OPERATION.
- E. CONNECT EXIT LIGHTS, EMERGENCY BATTERIES, AND NIGHT LIGHTS TO UNSWITCHED LEG OF CIRCUIT. THE UNSWITCHED LEG SHALL BYPASS ANY LIGHTING CONTROL DEVICES INCLUDING RELAYS, SWITCHES, OCCUPANCY SENSORS, OR DAYLIGHT CONTROL DEVICES.
- F. TEST SWITCHES FOR EMERGENCY BATTERIES SHALL BE INTEGRAL TO LUMINAIRE. COORDINATE WITH SUPPLIER AS FACTORY INSTALLED BATTERIES MAY BE NECESSARY TO MEET THIS REQUIREMENT.
- G. LOCATE EXIT SIGNS FOR MAXIMUM VIEWING AREA TO IDENTIFY EGRESS PATHS AS INDICATED ON PLANS. COORDINATE LOCATIONS SUCH THAT ARCHITECTURAL FEATURES OR EQUIPMENT FROM OTHER TRADES DO NOT OBSTRUCT VIEW.
- H. INSTALL SWITCHES AND OTHER CONTROL DEVICES WITHIN 1' OF LATCH SIDE OF DOOR, SIDELIGHT, OR DOOR SWING IN OPEN POSITION. DO NOT INSTALL DEVICES BEHIND DOOR SWING. COORDINATE WITH ACTUAL DOOR ASSEMBLY PRIOR TO ROUGH-IN.
- I. LOCATE OCCUPANCY SENSORS FOR MAXIMUM COVERAGE AND TO LIMIT FALSE TRIPPING. FOLLOW MANUFACTURER'S RECOMMENDATIONS FOR ALLOWABLE PROXIMITY TO MECHANICAL DIFFUSERS.
- J. INSTALL POWER PACKS OR OTHER CONTROL RELAYS ABOVE ACCESSIBLE CEILINGS, LABEL DEVICE AND AREA CONTROLLED.
- K. LOCATE PHOTOCELLS IN ACCORDANCE WITH MANUFACTURER'S RECOMMENDATIONS FOR OPTIMAL RESPONSE TO NATURAL LIGHT IN SPACE AND TO MINIMIZE FALSE READINGS.
- L. ADJUST SENSITIVITY, COVERAGE AREA, AND TIME DELAY FOR LIGHTING CONTROL DEVICES DURING CONSTRUCTION. PROVIDE FOLLOW UP VISIT THREE WEEKS AFTER OWNER HAS OCCUPIED SPACE TO MAKE ADDITIONAL ADJUSTMENTS TO ACCOUNT FOR FURNITURE LAYOUTS AND USER INPUT.
- M. COORDINATE WITH MECHANICAL CONTRACTOR FOR INTEGRATION OF OCCUPANCY SENSORS WITH MECHANICAL SYSTEM CONTROLS. PROVIDE ADDITIONAL RELAYS AS REQUIRED.
- N. RECESSED LUMINAIRES SHALL BE SECURED SUCH THAT THE FORCE REQUIRED TO INSERT LAMPS, TRIMS, LENSES, LOUVERS, OR DOOR FRAMES DOES NOT SHIFT HOUSING.
- O. SEE TYPICAL UNIT PLANS FOR UNIT LIGHTING.

KEYNOTES:

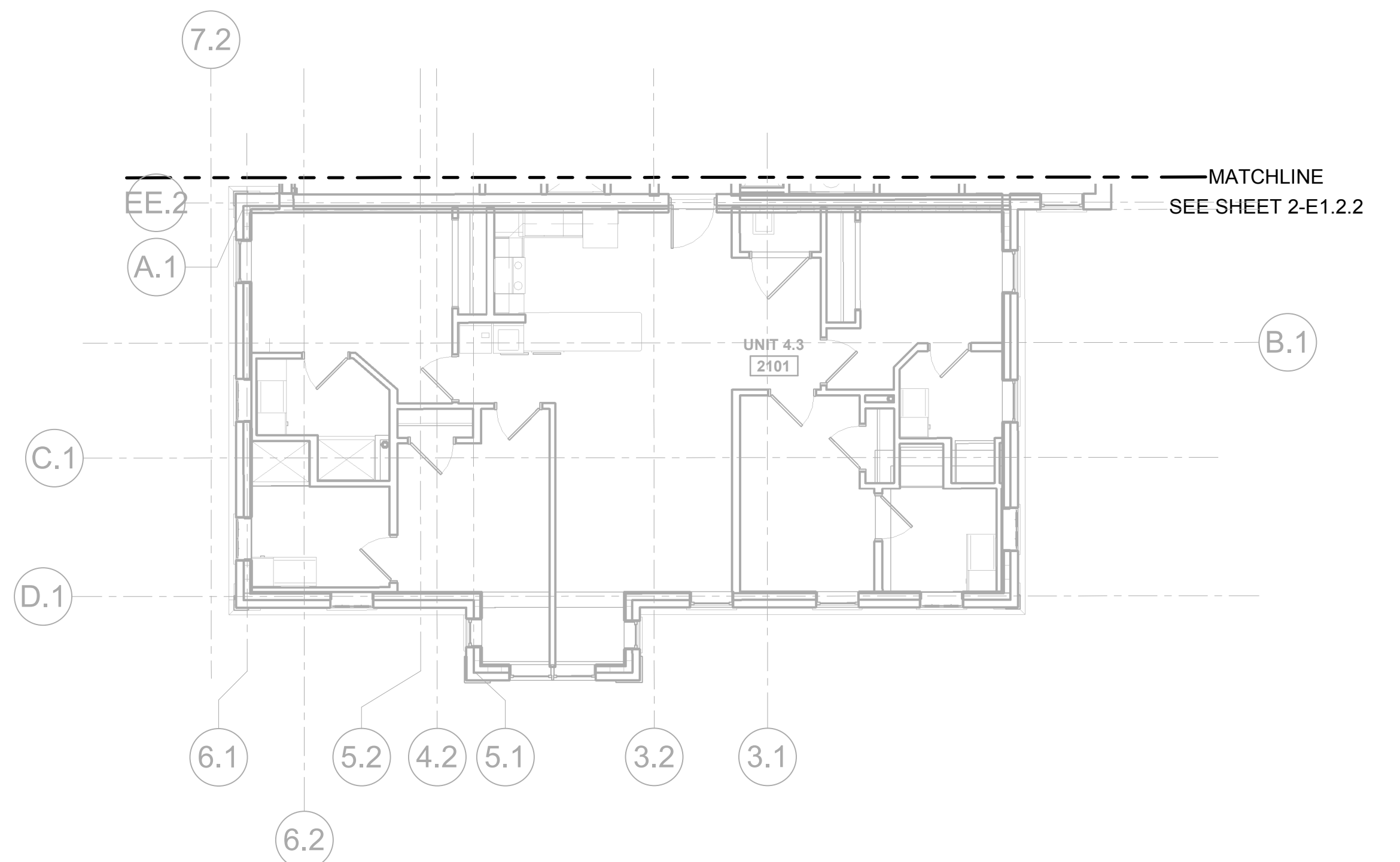
- 1. PROVIDE SWITCHED AND UNSWITCHED CONDUCTORS TO FIXTURES WITH EMERGENCY BATTERIES TO ALL THE FIXTURE TO BE DIMMED OR SWITCHED OFF, BUT STILL ILLUMINATE IN THE EVENT OF A POWER OUTAGE.



LIGHTING PLAN - BLDG 1 - FLOOR 1
SCALE: 1/8" = 1'-0"



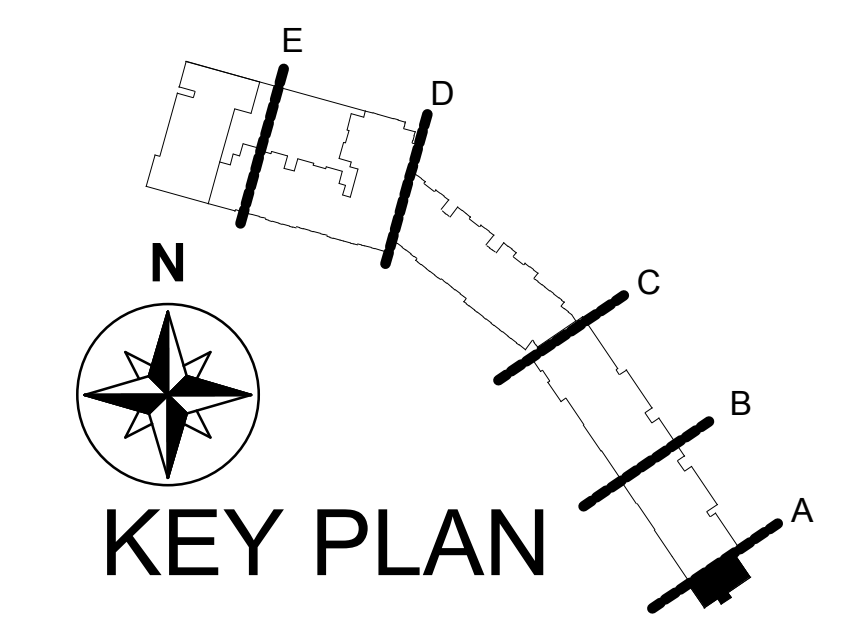
LIGHTING PLAN - BLDG 1 - FLOOR 3
SCALE: 1/8" = 1'-0"



LIGHTING PLAN - BLDG 1 - FLOOR 2
SCALE: 1/8" = 1'-0"

FOR ELECTRICAL WORK IN APARTMENTS, REFER TO CORRESPONDING TYPICAL UNIT PLAN IN THE FOLLOWING TABLE:

UNIT TYPE	SHEET #
0.1A	2-E4.1
0.2	2-E4.1
0.3	2-E4.1
1.1	2-E4.1
1.2	2-E4.1
2.1	2-E4.2
2.1A	2-E4.2
2.2	2-E4.2
2.3	2-E4.2
3.1	2-E4.3
3.1A	2-E4.3
3.2	2-E4.3
3.3	2-E4.3
4.1	2-E4.4
4.1A	2-E4.4
4.2	2-E4.4
4.3	2-E4.4
4.4	2-E4.5
4.5	2-E4.5
4.6	2-E4.5
4.7	2-E4.5
T.1	2-E4.6
T.2	2-E4.6
T.3	2-E4.7
T.4	2-E4.7
T.5	2-E4.7



KEY PLAN

737 South Third Street, Lenoirville, Kentucky 40202-2100
502.885.4181, 502.897.0488 Fax: www.luckettfarley.com
Master Planning | Architecture | Engineering | Interior Design
Design Build | Building Commissioning | Special Inspections

Luckett & Farley
ARCHITECTURAL FIRM LICENSE NUMBER: 5088
ENGINEERING FIRM LICENSE NUMBER: E-0207
© 2018

ACA BEMIG PRIVATIZATION

**Academic Privatization
Rivers Walk**
178 S. WATERS ST., BOONE, NC 28607

#	DATE	DESCRIPTION
1	12/19/2018	ISSUED FOR PERMIT

OSHA NO.	2017.021
MADE BY	CSS
CHECKED BY	CSS
DATE	12/19/2018
LIGHTING PLANS - BUILDING 1 - FLOORS 1, 2, 3	
DRAWING NO.	2-E1.1.1