



737 South Third Street, Lenoirville, Kentucky 40202-2100  
502.855.4181 | 502.857.0488 Fax | www.luckettfarley.com  
Master Planning | Architecture | Engineering | Interior Design  
Design Build | Building Commissioning | Special Inspections

ARCHITECTURAL FIRM LICENSE NUMBER: 5088  
ENGINEERING FIRM LICENSE NUMBER: E-0207  
**Luckett & Farley**  
© 2018



Academic Privatization  
Rivers Walk  
178 S. WATERS ST., BOONE, NC 28607

#	Description	Date
1	DESIGNED BY	12/19/2018
2	REVISIONS	12/19/2018
3	APPROVED BY	12/19/2018

OSHA NO.	2017.021		
MADE BY	RMT	CHECKED	RMT
DATE	12/19/2018		
POWER PLAN - BUILDING 1 - FLOORS 1, 2, 3, ROOF			
DRAWING NO.	2-E2.1.1		

**GENERAL NOTES - POWER:**

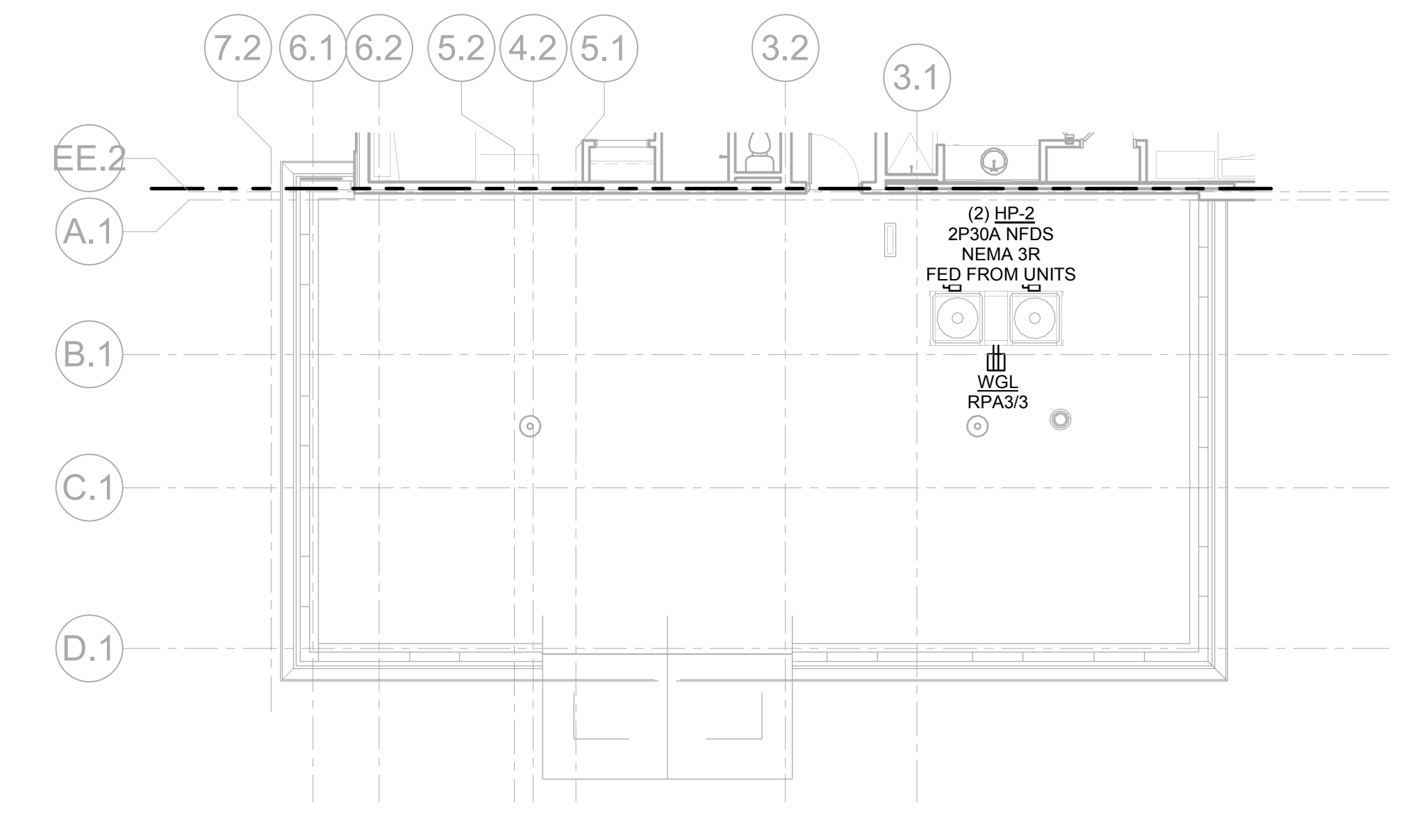
- A. SEE SHEET E2.0 FOR ADDITIONAL GENERAL NOTES
- B. SEE PANEL SCHEDULES AND MECHANICAL EQUIPMENT SCHEDULE FOR RELATED INFORMATION
- C. PROVIDE A COVER PLATE LABELED "GFCI PROTECTED" FOR EACH RECEPTACLE SUPPLIED FROM A REMOTE GFCI BREAKER OR DEVICE
- D. REVIEW AND COORDINATE CONNECTIONS TO ELECTRICALLY OPERATED EQUIPMENT FURNISHED BY OTHER TRADES WITH PROJECT CONTRACT DOCUMENTS, SHOP DRAWINGS, SUBMITTALS, AND INSTALLATION INSTRUCTIONS. NOTIFY ARCHITECT IN WRITING OF DISCREPANCIES PRIOR TO PROCEEDING WITH WORK
- E. LOCATIONS OF ELECTRICAL CONNECTIONS AND LOCAL DISCONNECTS SHALL BE COORDINATED WITH MECHANICAL AND PLUMBING CONTRACTORS TO ENSURE ACCESS AND WORKING CLEARANCE IS MAINTAINED PER NEC. NOTIFY OTHER TRADES OF REQUIRED CLEARANCE AREAS TO AVOID ROUTING OF OTHER SYSTEMS IN THESE AREAS. DO NOT INSTALL ELECTRICAL EQUIPMENT OVER EQUIPMENT NAMEPLATES OR ACCESS PANELS.
- F. PROVIDE MAINTENANCE RECEPTACLE WITHIN 26 FT OF EACH MECHANICAL UNIT AS REQUIRED BY NEC. COORDINATE INSTALLATION LOCATIONS WITH FINAL EQUIPMENT LAYOUT PROVIDED BY MECHANICAL CONTRACTOR
- G. REFER TO EQUIPMENT SCHEDULES AND DETAILS ON ALL CONTRACT DOCUMENTS FOR ADDITIONAL INFORMATION FOR MECHANICAL AND PLUMBING CONNECTIONS. PROVIDE LABOR AND MATERIALS FOR A COMPLETE AND OPERABLE SYSTEM
- H. PROVIDE EQUIPMENT OVERCURRENT PROTECTION AND FEEDER SIZES PER ACTUAL EQUIPMENT NAMEPLATES AND INSTALLATION INSTRUCTIONS
- I. DISTRIBUTION EQUIPMENT SIZES AND EQUIPMENT LAYOUT SHALL BE CONSIDERED BASIS OF DESIGN. EQUIPMENT SIZES VARY BY MANUFACTURER. IF PROPOSED EQUIPMENT IS LARGER THAN THE SIZES ILLUSTRATED, THE CONTRACTOR SHALL SUBMIT REVISED EQUIPMENT LAYOUTS ILLUSTRATING REQUIRED CLEARANCES ARE MAINTAINED.

**GENERAL NOTES - ROOF:**

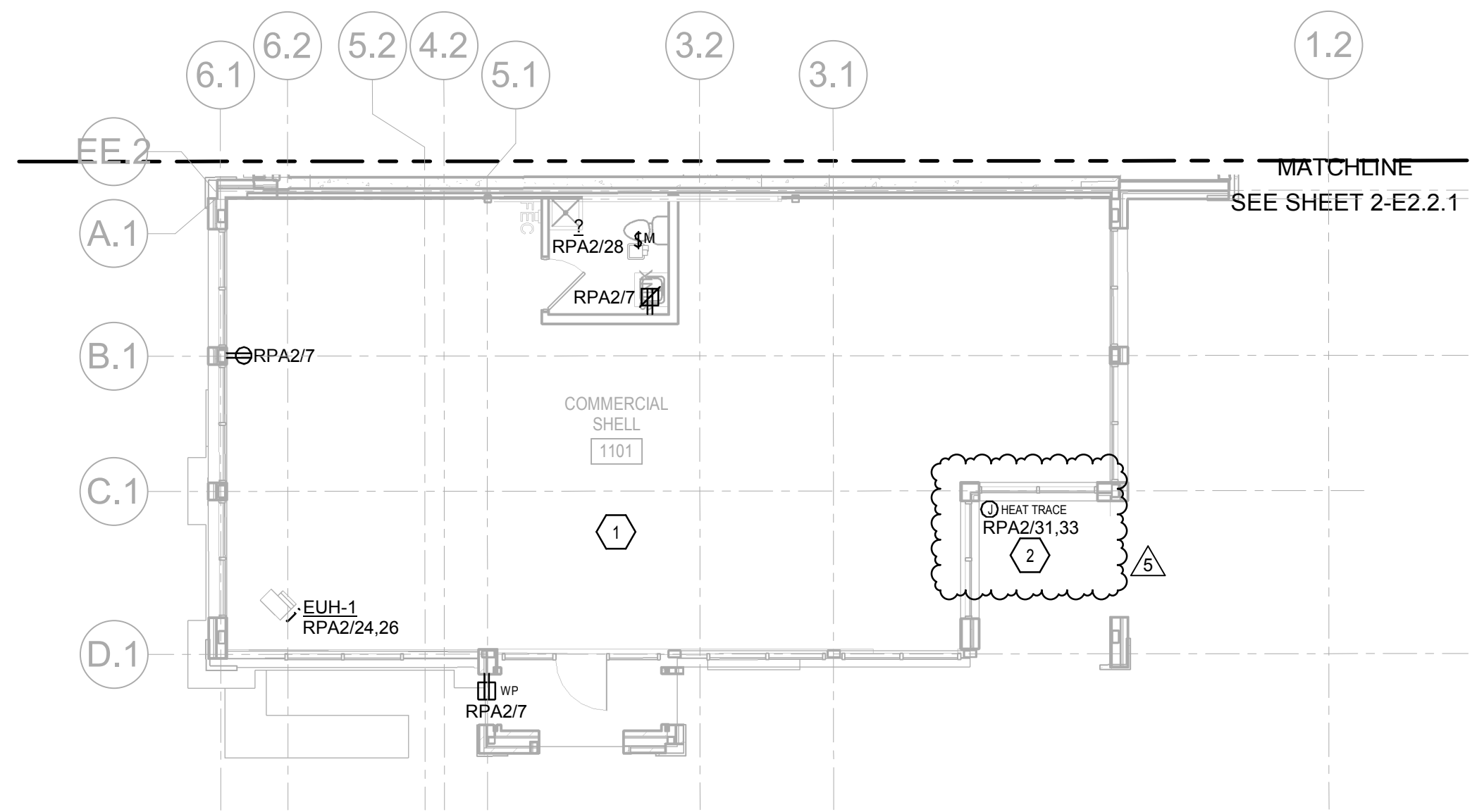
- A. SEE SHEET E2.0 FOR ADDITIONAL GENERAL NOTES
- B. LOCATIONS OF ELECTRICAL CONNECTIONS AND LOCAL DISCONNECTS SHALL BE COORDINATED WITH MECHANICAL AND PLUMBING CONTRACTORS TO ENSURE ACCESS AND WORKING CLEARANCE IS MAINTAINED PER NEC. NOTIFY OTHER TRADES OF REQUIRED CLEARANCE AREAS TO AVOID ROUTING OF OTHER SYSTEMS IN THESE AREAS. DO NOT INSTALL ELECTRICAL EQUIPMENT OVER EQUIPMENT NAMEPLATES OR ACCESS PANELS.
- C. PROVIDE MAINTENANCE RECEPTACLE WITHIN 26 FT OF EACH MECHANICAL UNIT AS REQUIRED BY NEC. COORDINATE INSTALLATION LOCATIONS WITH FINAL EQUIPMENT LAYOUT PROVIDED BY MECHANICAL CONTRACTOR
- D. CONDUIT FOR ROOF MOUNTED EQUIPMENT SHALL BE ROUTED IN CEILING SPACE BELOW ROOF DECK UNO.
- E. COORDINATE WITH ARCHITECTURAL AND STRUCTURAL PLANS FOR ROOF PENETRATIONS. SEAL PENETRATIONS PER ROOF MANUFACTURER'S RECOMMENDATIONS.
- F. ANY ADHESIVES USED ON ROOF SURFACES MUST BE APPROVED BY ROOF MANUFACTURER. DO NOT USE ANY PRODUCTS OR METHODS THAT VOID OR REDUCES ROOF WARRANTIES.
- G. WHERE RACEWAY OR CONDUCTORS ARE INSTALLED EXPOSED ON ROOF, DERATE AMPACITY OF CONDUCTORS IN ACCORDANCE WITH NEC
- H. COORDINATE EQUIPMENT CONNECTIONS WITH MECHANICAL CONTRACTOR TO ENSURE THAT ROOF TOP EQUIPMENT IS CONNECTED TO THE LOAD CENTER AND INDOOR UNIT OF DWELLING UNIT WHICH IT IS SERVICING. FIELD VERIFY EXACT REQUIREMENTS PRIOR TO ROUGH-IN.

**KEYNOTES:**

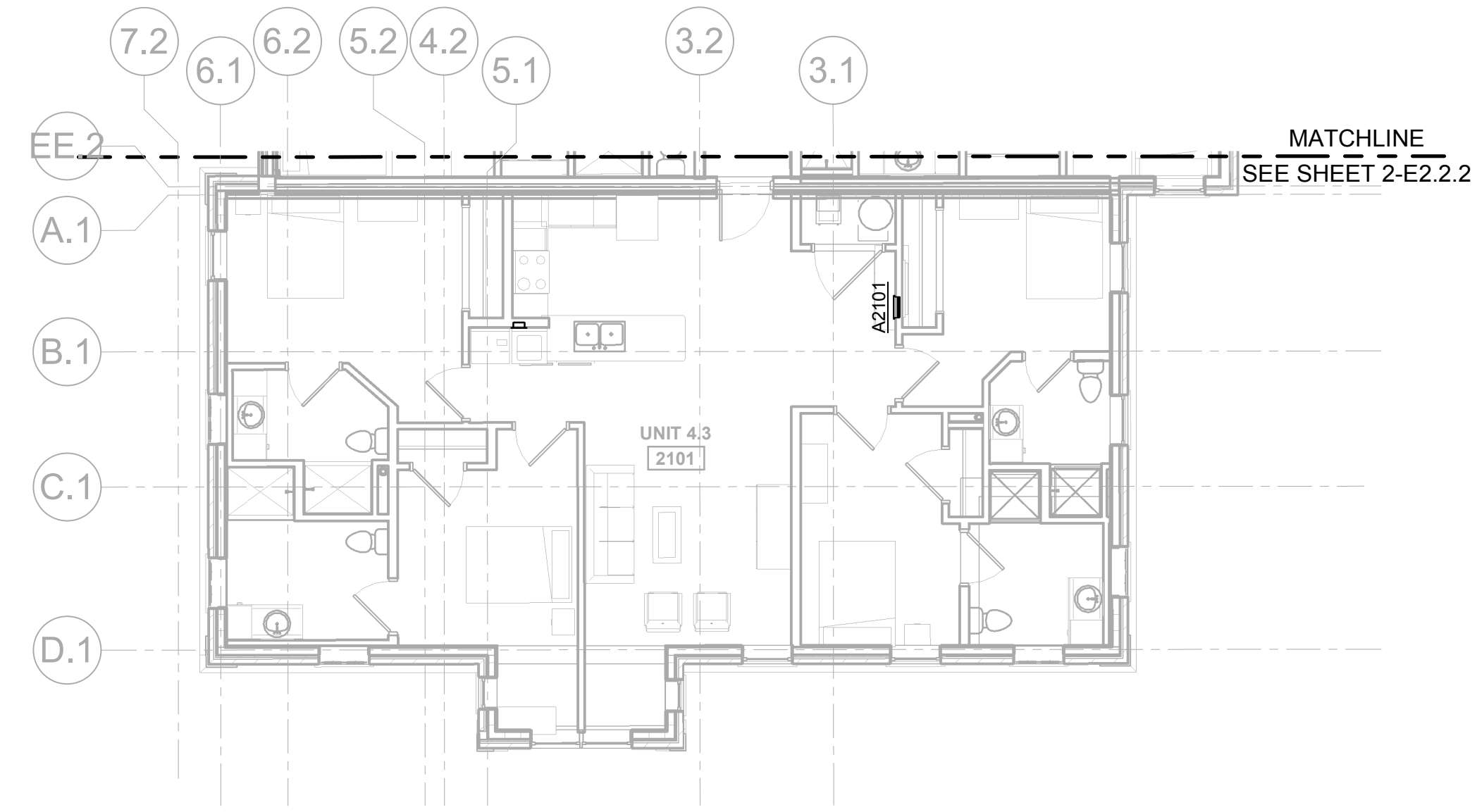
- 1 PROVIDE (2) 2-1/2" CONDUITS WITH PULL STRINGS FROM SWDB 'A' TO COMMERCIAL TENANT SPACE FOR FUTURE RPA SERVICE
- 2 HEAT TRACE POWER CONNECTION KIT. REFER TO VENDOR DRAWINGS FOR EXACT LOCATION (TYPICAL FOR ALL)



**POWER PLAN - BLDG 1 - ROOF**  
SCALE: 1/8" = 1'-0"



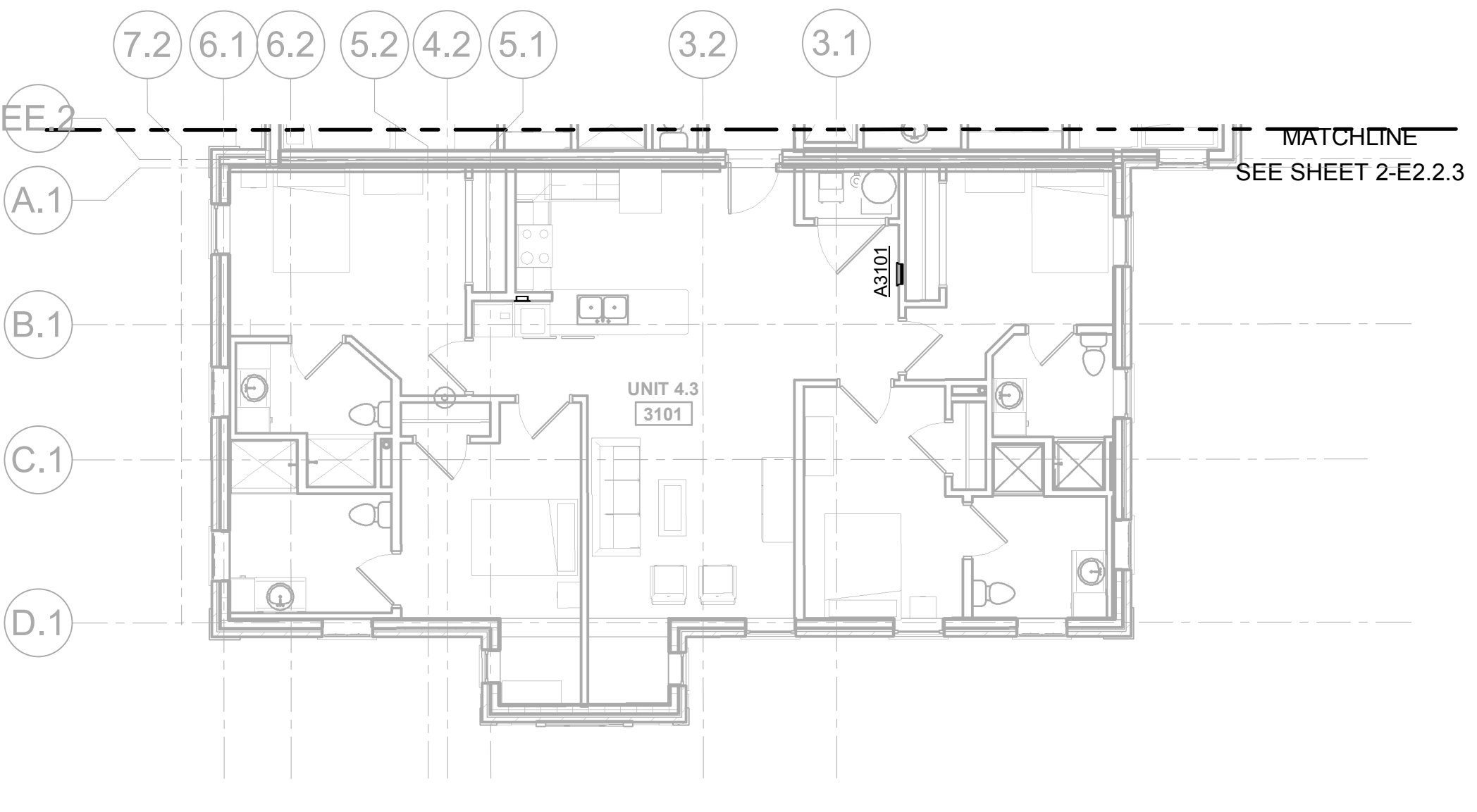
**POWER PLAN - BLDG 1 - FLOOR 1**  
SCALE: 1/8" = 1'-0"



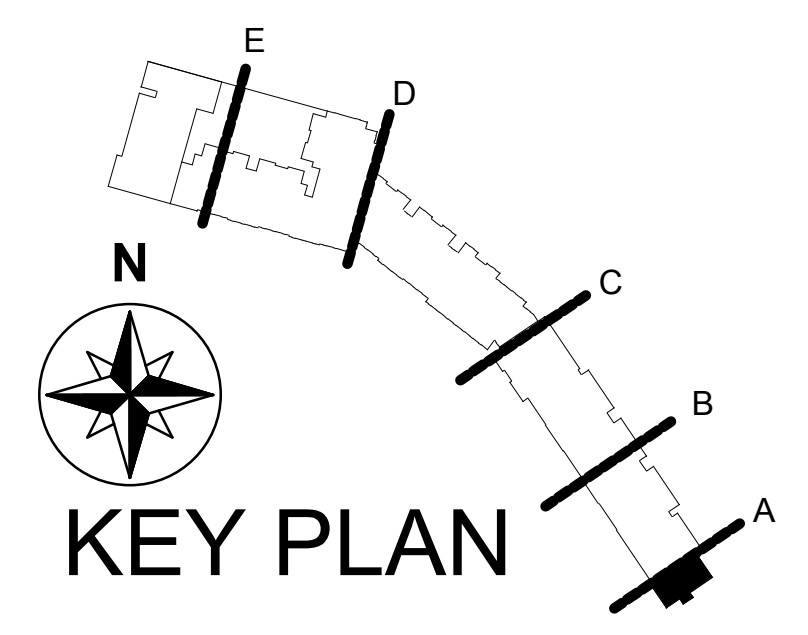
**POWER PLAN - BLDG 1 - FLOOR 2**  
SCALE: 1/8" = 1'-0"

FOR ELECTRICAL WORK IN APARTMENTS, REFER TO CORRESPONDING TYPICAL UNIT PLAN IN THE FOLLOWING TABLE:

UNIT TYPE	SHEET #
0.1A	2-E4.1
0.2	2-E4.1
0.3	2-E4.1
1.1	2-E4.1
1.2	2-E4.1
2.1	2-E4.2
2.1A	2-E4.2
2.2	2-E4.2
2.3	2-E4.2
3.1	2-E4.3
3.1A	2-E4.3
3.2	2-E4.3
3.3	2-E4.3
4.1	2-E4.4
4.1A	2-E4.4
4.2	2-E4.4
4.3	2-E4.4
4.4	2-E4.5
4.5	2-E4.5
4.6	2-E4.5
4.7	2-E4.5
T.1	2-E4.6
T.2	2-E4.6
T.3	2-E4.7
T.4	2-E4.7
T.5	2-E4.7



**POWER PLAN - BLDG 1 - FLOOR 3**  
SCALE: 1/8" = 1'-0"



**KEY PLAN**