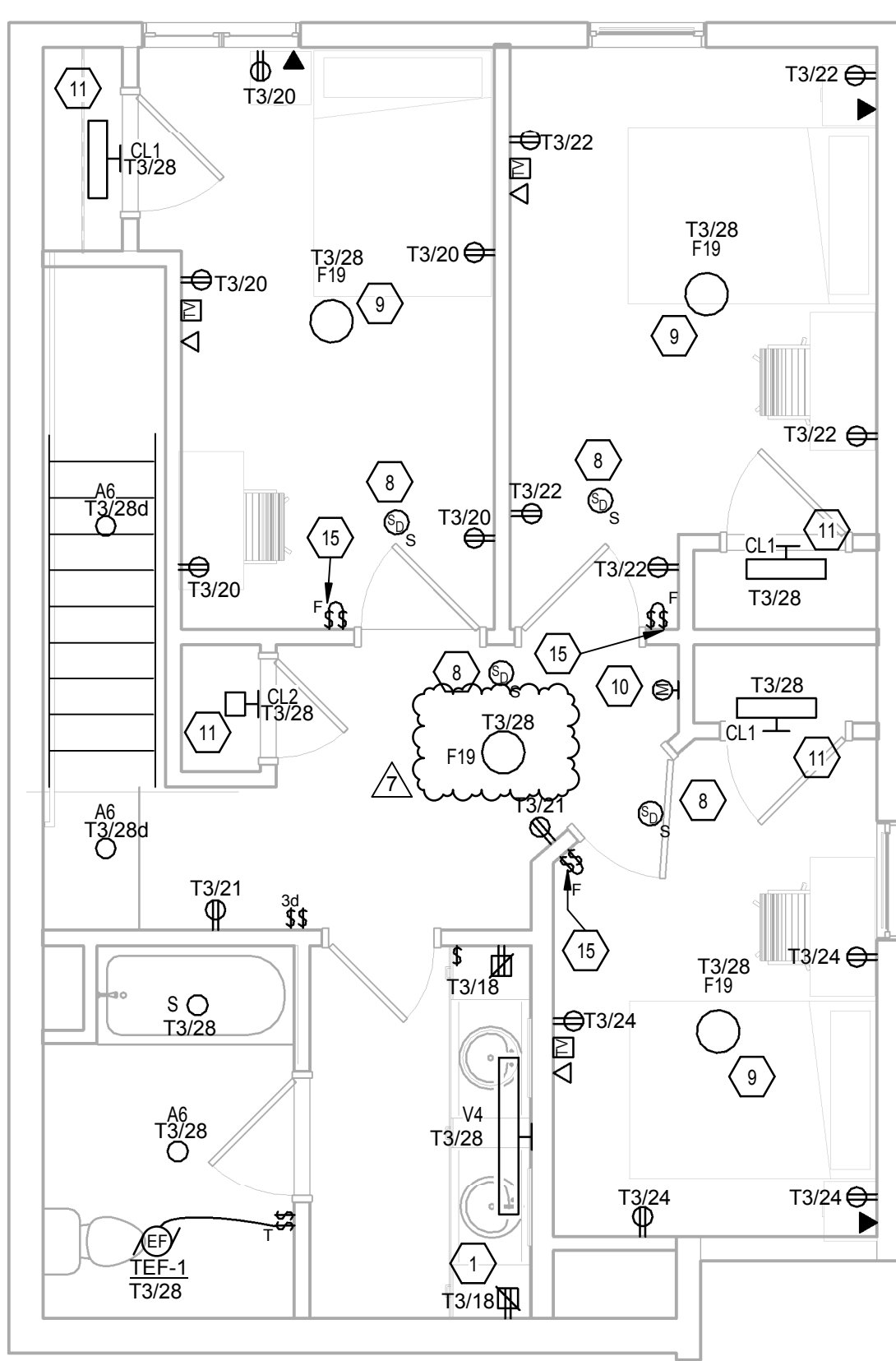


TYPICAL UNIT ELECTRICAL GENERAL NOTES

- A. SEE SHEET EL.0 FOR ADDITIONAL GENERAL NOTES.
B. CODE COMPLIANCE: ALL ELECTRICAL WORK SHALL COMPLY WITH OR SURPASS THE REQUIREMENTS OF THE NATIONAL ELECTRICAL CODE, NFPA 70, 2014 WITH NORTH CAROLINA AMENDMENTS.
C. MEETING REQUIREMENTS: ALL WORK SHALL MEET THE REQUIREMENTS OF THE FOREMENTIONED CODES AND ALL CODES AND STANDARDS REFERENCED IN THE SPECS. ALTHOUGH THE DETAILS OF SUCH WORK MAY NOT BE SHOWN ON THE DRAWINGS OR REFERENCED IN THE SPECIFICATIONS.
D. CONFLICTS: CONFLICTS BETWEEN THE APPLICABLE CODES, STANDARDS AND THE PLANS AND SPECIFICATIONS MUST BE BROUGHT TO THE ATTENTION OF THE RESIDENT QUALITY CONTROL MANAGER PRIOR TO PROCEEDING WITH WORK IN QUESTION.
E. METHODS OF CONSTRUCTION: UNLESS OTHERWISE NOTED OR SHOWN, THESE DRAWINGS AND SPECIFICATIONS DO NOT INDICATE METHODS OF CONSTRUCTION. THE CONTRACTOR SHALL SUPERVISE AND DIRECT THE WORK AND BE SOLELY RESPONSIBLE FOR ALL CONSTRUCTION MEANS, METHODS, MATERIALS, SEQUENCES, PROCEDURES AND SAFE PRACTICES.
F. DIAGRAMMATIC PLANS: DRAWINGS ARE DIAGRAMMATIC IN NATURE AND CANNOT SHOW EVERY CONNECTION, JUNCTION BOX, WIRE AND CONDUIT, ETC. THE EXACT LOCATIONS AND ARRANGEMENT OF ALL PARTS SHALL BE DETERMINED AS THE WORK PROGRESSES. THE CONTRACTOR SHALL BE RESPONSIBLE FOR PROVIDING A COMPLETE AND FUNCTIONAL ELECTRICAL SYSTEM.
G. DIAGRAMMATIC CABLE ROUTING: ROUTING PLANS ARE DIAGRAMMATIC. ACTUAL ROUTING, SWITCH AND OUTLET PLACEMENT MAY VARY ACCORDING TO FIELD CONDITIONS. CONTRACTOR SHALL NOTIFY OWNER'S QUALITY CONTROL MANAGER PRIOR TO MAKING CHANGES TO ACCOMMODATE FIELD CONDITIONS. ALL WIRING SHALL BE CONSISTENT FROM ONE UNIT TO THE NEXT.
H. INCIDENTAL ITEMS: INCIDENTAL ITEMS NOT INDICATED ON DRAWINGS, NOT MENTIONED IN THE SPECS THAT CAN BE LEGITIMATELY AND REASONABLY BELIEVED TO BELONG TO THE WORK DESCRIBED OR NECESSARY IN GOOD PRACTICE TO PROVIDE A COMPLETE SYSTEM, SHALL BE FURNISHED AND INSTALLED AS THOUGH ITEMIZED HERE IN DETAIL.
I. COMPLETE AND FUNCTIONAL SYSTEM: CONTRACTOR SHALL FURNISH MATERIALS, TOOLS, SERVICES, LABOR ETC. FOR A COMPLETE AND FULLY FUNCTIONAL ELECTRICAL INSTALLATION UNLESS OTHERWISE NOTED ON PLANS.
J. COORDINATION WITH OTHER TRADES: THE CONTRACTOR SHALL BE RESPONSIBLE FOR COORDINATING ALL ELECTRICAL INSTALLATIONS WITH ALL OTHER TRADES TO AVOID ANY CONFLICTS WITH PIPING, DUCTS, STRUCTURES, ETC.
K. EXTERIOR ELECTRICAL: ALL EXTERIOR ELECTRICAL EQUIPMENT EXPOSED OR INSTALLED OUTDOORS SHALL BE NEMA 3R.
L. COPPER CONDUCTORS: ALL CONDUCTORS SHALL BE COPPER, MINIMUM SIZE #12 AWG, UNLESS OTHERWISE NOTED.
M. EQUIPMENT BONDING: ALL EQUIPMENT SUCH AS ENCLOSURES, METALLIC CONDUITS, JUNCTION BOXES, FIXTURES AND ALL OTHER METALLIC APPARATUS SHALL BE PERMANENTLY AND EFFECTIVELY BONDED TO THE ELECTRICAL GROUNDING SYSTEM.
N. OUTLET GROUNDING: ALL EQUIPMENT, APPLIANCES, LIGHTING FIXTURES AND RECEPTACLES SHALL BE GROUND BY AN EQUIPMENT GROUNDING CONDUCTOR WHICH SHALL BE TERMINATED AT THE GROUNDING SCREW IN THE OUTLET BOX. A GROUNDING JUMPER SHALL CONNECT THE EQUIPMENT, APPLIANCE, FIXTURE OR RECEPTACLE TO THIS GROUNDING SCREW.
O. GROUNDING REQUIREMENTS: ALL GROUNDING AND BONDING SHALL MEET ALL OF THE REQUIREMENTS OF N.E.C. ARTICLE 250.
P. GROUNDING OF METALLIC PIPING: METALLIC PIPING (WATER & GAS) IN EACH UNIT SHALL BE BONDED TO THE EQUIPMENT GROUNDING SYSTEM PER N.E.C. ARTICLE 250.
Q. FIXTURE LOCATION AND ORIENTATION: LOCATION AND ORIENTATION OF ALL INTERIOR AND EXTERIOR FIXTURES SHALL BE INSTALLED AS SHOWN.
R. OUTLET PLACEMENT: OUTLETS IN COMMON WALLS ARE TO BE SEPARATED BY ONE STUD BAY. COMPLY WITH R.R. REQUIREMENTS FOR WALL RATING; OUTLETS SHALL BE INSTALLED SO THAT NO POINT ALONG THE FLOOR LINE IN ANY WALL SPACE (IN ROOMS WHERE OUTLETS ARE REQUIRED BY THE N.E.C. 210.52) IS MORE THAN 6 FT MEASURED HORIZONTALLY FROM AN OUTLET IN THAT SPACE, 12 FT BETWEEN OUTLETS.
S. IN DORMITORY ROOMS RECEPTACLES MAY BE PLACED CONVENIENTLY FOR THE PERMANENT FURNITURE LAYOUT PROVIDING THE NUMBER OF RECEPTACLES IS NOT REDUCED, AND AT LEAST TWO RECEPTACLES ARE READILY ACCESSIBLE. NEC 210.8(B).
T. WALL PENETRATIONS: PENETRATIONS THROUGH FIRE RATED PARTITIONS SHALL BE SEALED AS REQUIRED BY APPLICABLE CODE. SLEEVE AND CAULK OR USE OTHER LISTED MEANS.
U. CONTRACTOR SHALL SIZE SWITCH AND RECEPTACLE BOXES PER N.E.C. 370-16.
V. LIGHT FIXTURE LOCATIONS: ELECTRICAL LIGHT FIXTURE SHALL BE CENTERED IN ROOMS. SMOKE DETECTORS SHALL BE MOUNTED A MINIMUM OF 3 FT FROM THE EDGE OF THE CEILING FAN BLADES.
W. BOX FILL: JUNCTION BOXES SHALL BE INSTALLED AS REQUIRED TO MAINTAIN N.E.C. BOX FILL REQUIREMENTS.
X. EQUIPMENT LISTING AND LABELING: ALL ELECTRICAL COMPONENTS, ASSEMBLIES AND EQUIPMENT SHALL BE LISTED FOR THE PURPOSE OF USE AND LABELED BY U.L. OR OTHER ACCEPTABLE NATIONALLY RECOGNIZED TESTING LABORATORY.
Y. SEPARATE CIRCUITS: LIGHTING AND RECEPTACLES SHALL BE ON SEPARATE BRANCH CIRCUITS.
Z. SPECIAL APPLIANCE WIRING: CONNECTION TO DRYER SHALL BE FOUR WIRE WITH INSULATED NEUTRAL. NEUTRAL IS TO BE ISOLATED FROM GROUND DOWNSTREAM FROM MAIN BONDING JUMPER AT SERVICE ENTRANCE. WIRE PER NEC.
AA. INTERIOR ELECTRICAL BOXES ON EXTERIOR WALLS SHALL BE CALKED AROUND THE PERIMETER BETWEEN THE WALL BOARD AND THE BOX.
AB. PROVIDE TAMPER RESISTANT RECEPTACLES FOR ALL 125V 15 AND 20 AMPERE RECEPTACLES IN ACCORDANCE WITH NEC 408.12.
AC. ALL 120V 20A CIRCUITS SUPPLYING OUTLETS IN FAMILY ROOMS, LIVING ROOMS, BEDROOMS, CLOSETS, HALLWAYS, AND SIMILAR AREAS MUST BE PROTECTED BY LISTED AFCI/FI CIRCUIT INTERRUPTER IN ACCORDANCE WITH NEC 210.12 (A).
AD. ELECTRICAL CONTRACTOR WILL PROVIDE A STRUCTURED MEDIA CABINET IN EACH UNIT, AND PROVIDE TELEPHONE AND CATV SERVICE HOMES RUNS TO THE BUILDING COMMUNICATIONS SERVICE ENTRANCE. SEE TYPICAL UNIT COMMUNICATIONS RISER DIAGRAM.
AE. THE MAXIMUM HORIZONTAL REACH FOR SWITCHES ACROSS KITCHEN, UTILITY ROOM, BATHROOM OR OTHER COUNTERS SHALL BE 24 INCHES.
AF. INSTALL ALL RECEPTACLES WITH GROUND PRONG UP. INSTALL ALL SWITCHED RECEPTACLES WITH GROUND PRONG DOWN.
AG. REFRIGERATOR OUTLET IS NOT TO BE G.F.C.I. PROTECTED.
AH. COORDINATE SMOKE DETECTOR PLACEMENT WITH HVAC CONTRACTOR TO INSURE THAT SMOKE DETECTORS ARE A MINIMUM OF 3 FEET FROM ANY AIR-DUCT, EITHER EXHAUST OR INTAKE. DO NOT LOCATE SMOKE DETECTORS WITHIN 10 FEET OF SHOWERS OR TUBS.
AI. PROVIDE GROUND FAULT PROTECTION FOR ALL RECEPTACLES LOCATED IN BATHROOMS, GARAGES, OUTDOORS, IN KITCHENS WHERE SERVING COUNTERTOPS, WITHIN 6 FEET OF LAUNDRY, UTILITY ROOM, OR WET BAR SINKS, AND IN UNFINISHED BASEMENTS. INTEGRAL G.F.C.I. PROTECTED RECEPTACLES ARE REQUIRED FOR ALL EXTERIOR RECEPTACLES, MECHANICAL ROOMS, AT LEAST ONE IN GARAGE, LAUNDRY ROOM, AND EACH BATHROOM & POWER ROOM, AND AT LEAST ONE FOR EACH KITCHEN COUNTERTOP CIRCUIT.
AJ. SURFACE MOUNTED LIGHT FIXTURES IN CLOSETS MUST BE MOUNTED A MINIMUM OF 12 INCHES AWAY HORIZONTALLY FROM SHELVING / STORAGE SPACES.
AK. WHERE RECEPTACLES ARE LOCATED BEHIND A BED, PROVIDE A GUARD TO PREVENT ATTACHMENT PLUGS FROM CONTACTING THE BED IN ACCORDANCE WITH NEC 210.60(B).

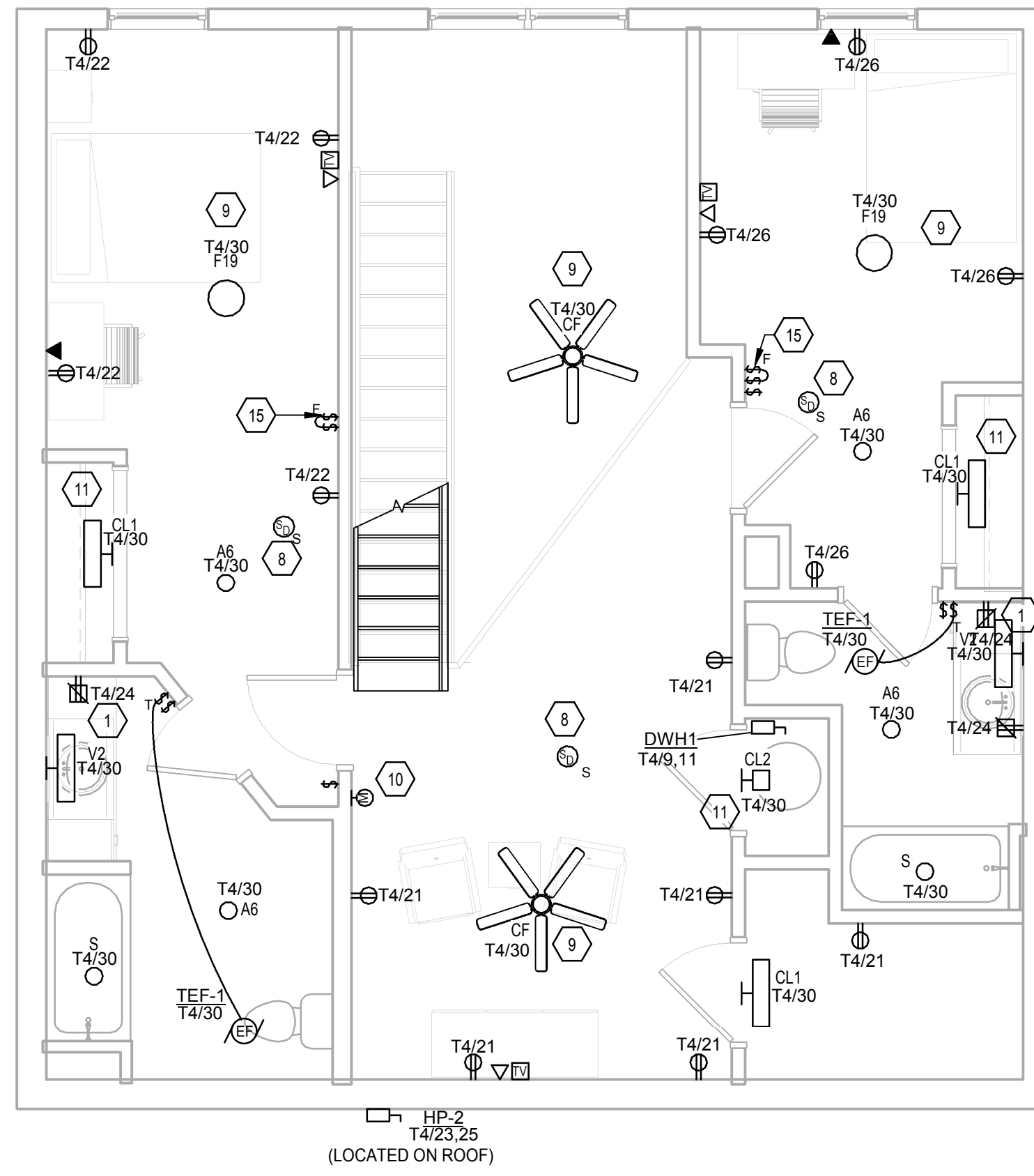
Table with columns: LOCATION, MOUNTING, ENCL. RATING, SPD, No, PANEL: T3, VOLTAGE, S.C. RATING, GROUND BUS, NEUTRAL RATING, SUPPLY FROM, MAINS TYPE, BUS RATING, CIRCUIT DESCRIPTION, NOTES, CKT. Includes a load classification table at the bottom.

Table with columns: LOCATION, MOUNTING, ENCL. RATING, SPD, No, PANEL: T4, VOLTAGE, S.C. RATING, GROUND BUS, NEUTRAL RATING, SUPPLY FROM, MAINS TYPE, BUS RATING, CIRCUIT DESCRIPTION, NOTES, CKT. Includes a load classification table at the bottom.



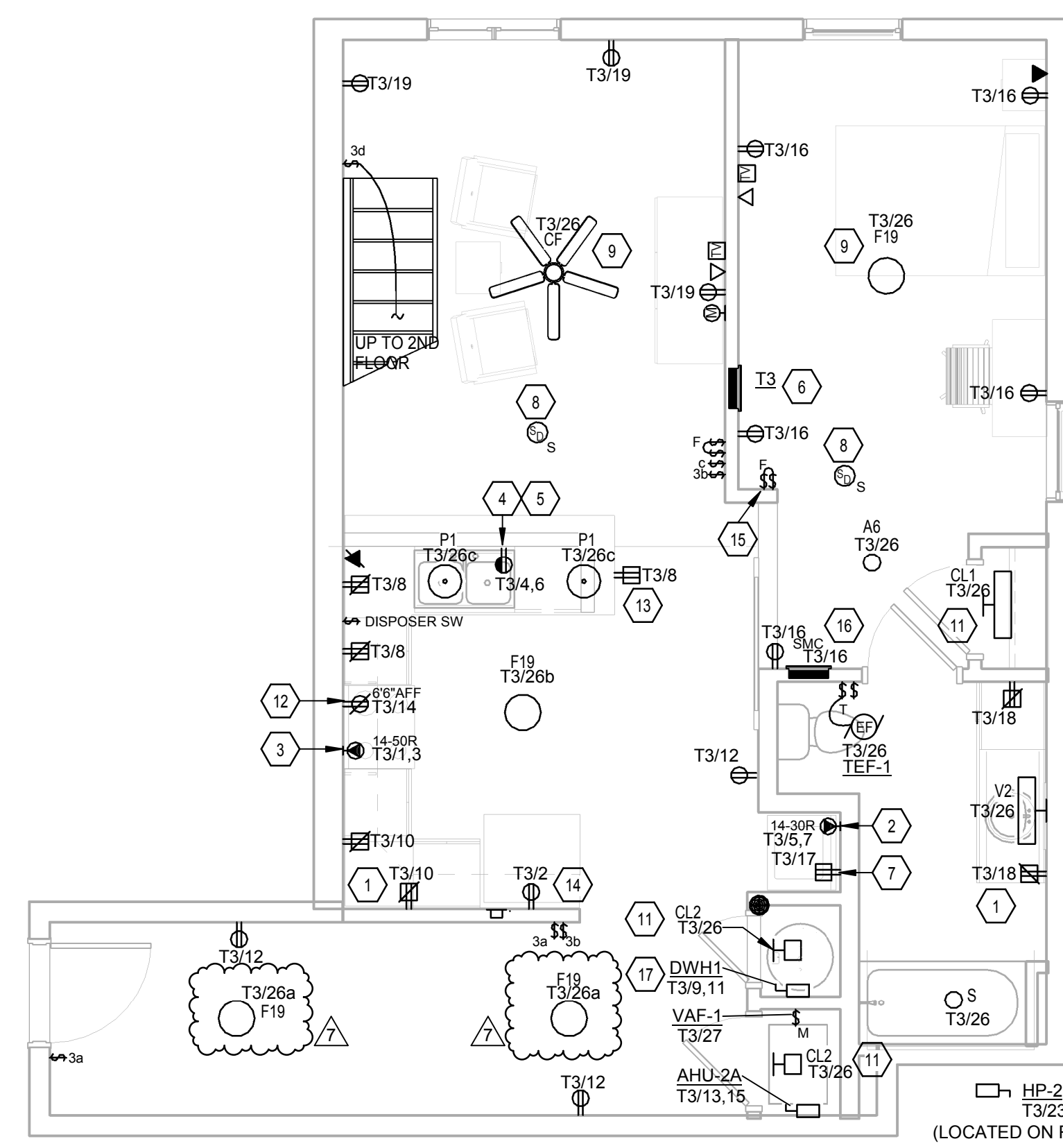
TYPICAL TOWNHOME PLAN T.3 FLOOR 2

SCALE: 1/4" = 1'-0"



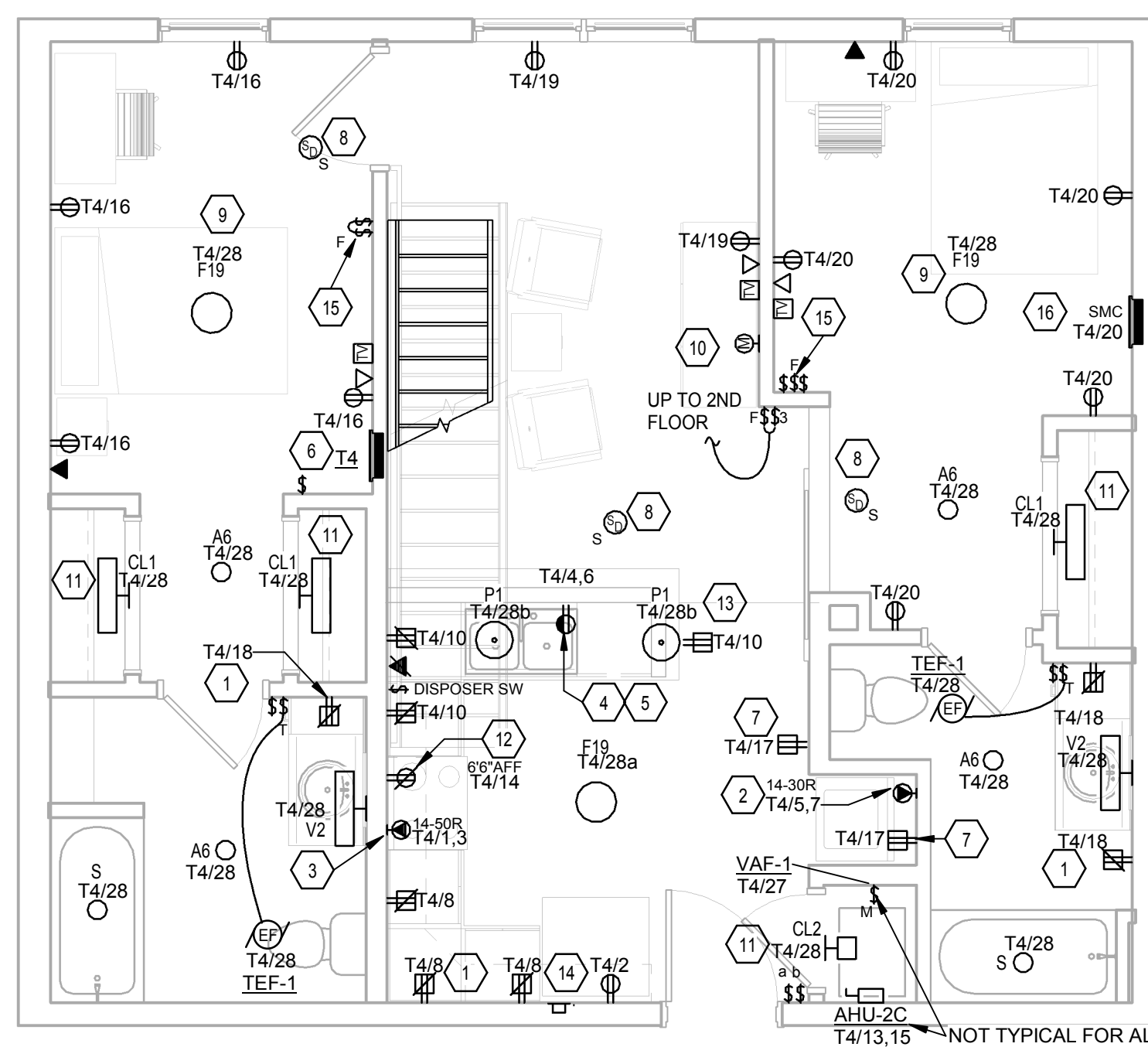
TYPICAL TOWNHOME PLAN T.4 & T.5 FLOOR 2

SCALE: 1/4" = 1'-0"



TYPICAL TOWNHOME PLAN T.3 FLOOR 1

SCALE: 1/4" = 1'-0"



TYPICAL TOWNHOME PLAN T.4 & T.5 FLOOR 1

SCALE: 1/4" = 1'-0"

KEYNOTES:

- 1. KITCHEN APPLIANCE CIRCUIT: 20A, 125 VOLT, DUPLEX G.F.C.I.P. RECEPTACLE, NEMA 5-20R.
2. DEDICATED CIRCUIT: 30A, 250 VOLT RECEPTACLE FOR ELECTRIC CLOTHES DRYER, NEMA 14-30R. PROVIDE 3#10 AWG, #10 GND.
3. 50A, 250 VOLT RECEPTACLE FOR ELECTRIC RANGE, NEMA 14-50R. PROVIDE 3#6 AWG, #10 GND.
4. DEDICATED CIRCUIT: 20A, 125 VOLT RECEPTACLE, NEMA 5-20R UNDER SINK COUNTER FOR DISHWASHER. NEMA 5-20R RECEPTACLE WITH SPLIT YOKE SHARED WITH FOOD DISPOSAL. DO NOT USE COMMON NEUTRAL, SEPARATE CIRCUITS REQUIRED.
5. DEDICATED CIRCUIT: 20A, 125 VOLT RECEPTACLE, NEMA 5-20R UNDER SINK COUNTER FOR FOOD DISPOSAL CONTROLLED BY SWITCH. NEMA 5-20R RECEPTACLE WITH SPLIT YOKE SHARED WITH DISHWASHER. DO NOT USE COMMON NEUTRAL, SEPARATE CIRCUITS REQUIRED.
6. 150 AMP PANEL, DEAD FRONT, FLUSH MOUNTED, MINIMUM 3 SPARE CIRCUITS, FULL SIZE PLUG IN BREAKERS, MAIN CIRCUIT BREAKER.
7. DEDICATED CIRCUIT: LAUNDRY CIRCUIT: 20A, 125 VOLT DUPLEX GFI RECEPTACLE, NEMA 5-20R. FOR CLOTHES WASHER AND IRONING OUTLET.
8. SMOKE DETECTORS SHALL BE INTERCONNECTED SO THAT ACTIVATION OF ONE DETECTOR WILL SET OFF ALL DETECTORS WITHIN THE UNIT. MAINTAIN 3" OF CLEARANCE (MIN.) FROM CEILING FANS AND HVAC REGISTERS/GRILLS, AND 10 FT FROM SHOWERS. PROVIDE SOUNDER BASE. ACTIVATION OF A SINGLE DETECTOR IN A UNIT WILL INITIATE A LOCAL ALARM IN THE UNIT ONLY. IF MULTIPLE DETECTORS GO INTO ALARM IN A UNIT, THE BUILDING GENERAL ALARM SHALL ACTIVATE.
9. PROVIDE METAL FIXTURE BOX (LISTED) FOR FAN MOUNTING FOR ALL BEDROOMS, DINING ROOM AND LIVING ROOM. PROVIDE BLOCKING IF REQUIRED BY MANUFACTURER'S INSTRUCTIONS.
10. PROVIDE COMBINATION SMOKE-CARBON MONOXIDE DETECTOR WITH SOUNDER BASE, INTERCONNECT WITH SMOKE DETECTOR ALARM SIGNAL. MOUNTING HEIGHT SHALL BE 78" A.F.F. FOR WALL MOUNTED DETECTORS.
11. DO NOT MOUNT LIGHTS IN CLOSETS CLOSER THAN 12 INCHES HORIZONTALLY TO SHELVES.
12. DEDICATED CIRCUIT: 20A, 125 VOLT DUPLEX RECEPTACLE FOR MICROWAVE AND RANGE HOOD. INSTALL IN CABINET OVER RANGE, NEMA 5-20R. IN ADA UNITS PROVIDE A GFI RECEPTACLE FOR MICROWAVE AT ABOVE COUNTER HEIGHT, AND A JUNCTION BOX IN THE CABINET ABOVE THE RANGE FOR THE RANGE HOOD. CONNECT TO SWITCHES FOR THE HOOD LIGHT AND FAN.
13. MOUNT RECEPTACLE ON THE END OF THE KITCHEN COUNTER PENINSULA, 28" AFF.
14. DEDICATED CIRCUIT: 20A, 125 VOLT DUPLEX RECEPTACLE FOR REFRIGERATOR. ORIENT RECEPTACLE FOR REFRIGERATOR WITH GROUND HOLE ON THE BOTTOM. DO NOT INSTALL FAN SWITCH IN BEDROOMS, BUT PROVIDE FOR FUTURE FAN SPEED CONTROL. PROVIDE A TWO GANG BOX AND PLASTER RING FOR THE LIGHT SWITCH. PROVIDE A CONDUCTOR TO THE FIXTURE BOX FOR FUTURE FAN SPEED CONTROL. WIRE NOT UNUSED CONDUCTOR FOR FUTURE USE. PROVIDE A TWO GANG COVER PLATE WITH ONE SWITCH AND ONE BLANK. INCREASE BOX AND COVER SIZE WHERE ADDITIONAL SWITCHES OCCUR IN THE SAME LOCATION.
15. PROVIDE STRUCTURED MEDIA CENTER PANEL. INSTALL A STANDARD DUPLEX RECEPTACLE IN THE MEDIA CENTER FOR AN OCCUPANT SUPPLIED MODEM. SEE SYSTEMS RISER DIAGRAM FOR MORE INFORMATION.
16. PROVIDE A 2 POLE 60A, 208V DISCONNECT SWITCH FOR 10 KW WATER HEATER.



Lockett & Farley logo and contact information: 737 South Third Street, Lenoirville, Kentucky 40202-2100. Includes phone, fax, and website details.



Academic Privatization Rivers Walk, 178 S. WATERS ST., BOONE, NC 28607

Table with columns: Date, Description, and other project details.

Table with columns: COM NO, 2017.021, MADE BY, RMT, CHECKED, RMT, DATE, 12/19/2018, DRAWING NO, 2-E4.7.