

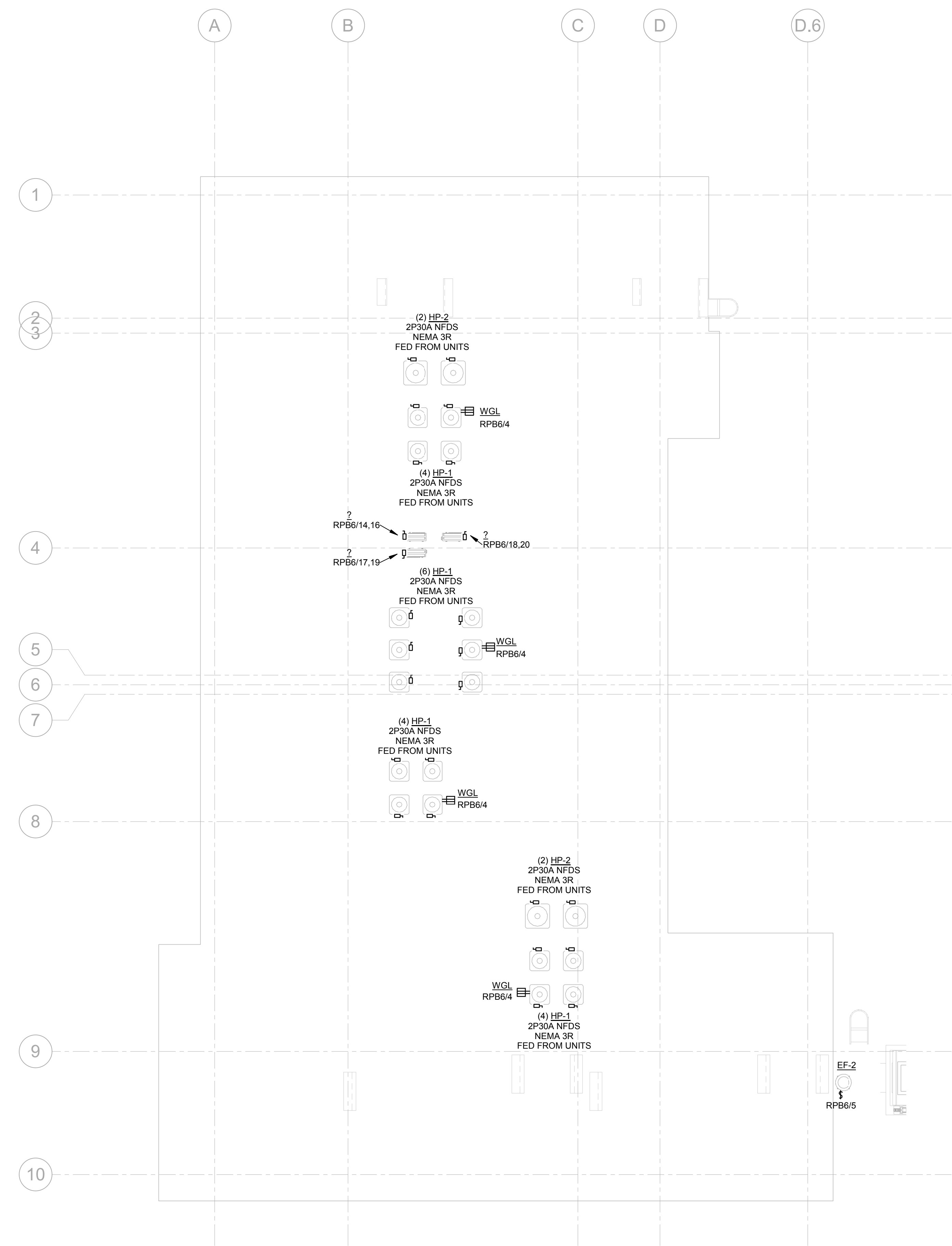


GENERAL NOTES - POWER:

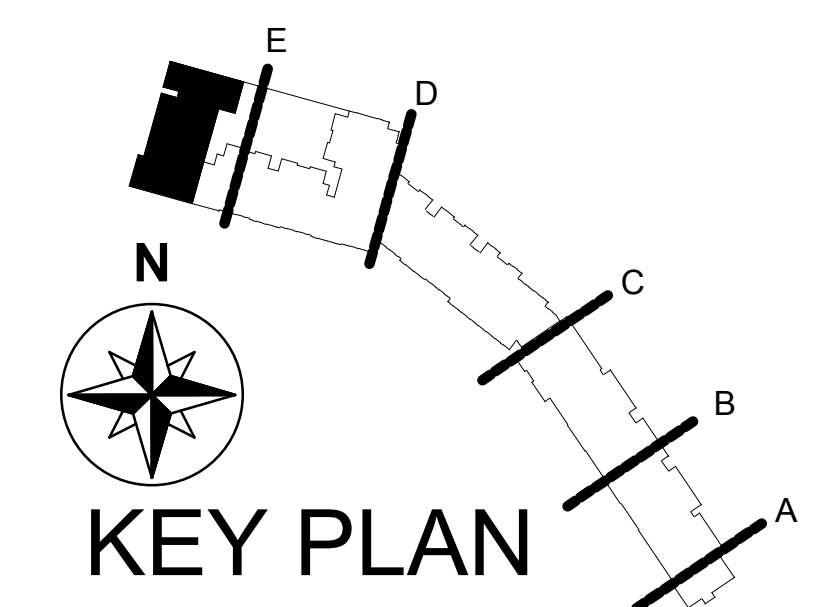
- A. SEE SHEET ELD FOR ADDITIONAL GENERAL NOTES.
- B. SEE PANEL SCHEDULES AND MECHANICAL EQUIPMENT SCHEDULE FOR RELATED INFORMATION.
- C. PROVIDE A COVER PLATE LABELED "GFCI PROTECTED" FOR EACH RECEPTACLE SUPPLIED FROM A REMOTE GFCI BREAKER OR DEVICE.
- D. REVIEW AND COORDINATE CONNECTIONS TO ELECTRICALLY OPERATED EQUIPMENT FURNISHED BY OTHER TRADES WITH PROJECT CONTRACT DOCUMENTS, SHOP DRAWINGS, SUBMITTALS, AND INSTALLATION INSTRUCTIONS. NOTIFY ARCHITECT IN WRITING OF DISCREPANCIES PRIOR TO PROCEEDING WITH WORK.
- E. LOCATIONS OF ELECTRICAL CONNECTIONS AND LOCAL DISCONNECTS SHALL BE COORDINATED WITH MECHANICAL AND PLUMBING CONTRACTORS TO ENSURE ACCESS AND WORKING CLEARANCE IS MAINTAINED PER NEC. NOTIFY OTHER TRADES OF REQUIRED CLEARANCE AREAS TO AVOID ROUTING OF OTHER SYSTEMS IN THESE AREAS. DO NOT INSTALL ELECTRICAL EQUIPMENT OVER EQUIPMENT NAMEPLATES OR ACCESS PANELS.
- F. PROVIDE MAINTENANCE RECEPTACLE WITHIN 25 FT OF EACH MECHANICAL UNIT AS REQUIRED BY NEC. COORDINATE INSTALLATION LOCATIONS WITH FINAL EQUIPMENT LAYOUT PROVIDED BY MECHANICAL CONTRACTOR.
- G. REFER TO EQUIPMENT SCHEDULES AND DETAILS ON ALL CONTRACT DOCUMENTS FOR ADDITIONAL INFORMATION FOR MECHANICAL AND PLUMBING CONNECTIONS. PROVIDE LABOR AND MATERIALS FOR A COMPLETE AND OPERABLE SYSTEM.
- H. PROVIDE EQUIPMENT OVERCURRENT PROTECTION AND FEEDER SIZES PER ACTUAL EQUIPMENT NAMEPLATES AND INSTALLATION INSTRUCTIONS.
- I. DISTRIBUTION EQUIPMENT SIZES AND EQUIPMENT LAYOUT SHALL BE CONSIDERED BASIS OF DESIGN. EQUIPMENT SIZES VARY BY MANUFACTURER. IF PROPOSED EQUIPMENT IS LARGER THAN THE SIZES ILLUSTRATED, THE CONTRACTOR SHALL SUBMIT REVISED EQUIPMENT LAYOUTS ILLUSTRATING REQUIRED CLEARANCES ARE MAINTAINED.

GENERAL NOTES - ROOF:

- A. SEE SHEET ELD FOR ADDITIONAL GENERAL NOTES.
- B. LOCATIONS OF ELECTRICAL CONNECTIONS AND LOCAL DISCONNECTS SHALL BE COORDINATED WITH MECHANICAL AND PLUMBING CONTRACTORS TO ENSURE ACCESS AND WORKING CLEARANCE IS MAINTAINED PER NEC. NOTIFY OTHER TRADES OF REQUIRED CLEARANCE AREAS TO AVOID ROUTING OF OTHER SYSTEMS IN THESE AREAS. DO NOT INSTALL ELECTRICAL EQUIPMENT OVER EQUIPMENT NAMEPLATES OR ACCESS PANELS.
- C. PROVIDE MAINTENANCE RECEPTACLE WITHIN 25 FT OF EACH MECHANICAL UNIT AS REQUIRED BY NEC. COORDINATE INSTALLATION LOCATIONS WITH FINAL EQUIPMENT LAYOUT PROVIDED BY MECHANICAL CONTRACTOR.
- D. CONDUIT FOR ROOF MOUNTED EQUIPMENT SHALL BE ROUTED IN CEILING SPACE BELOW ROOF DECK UNO.
- E. COORDINATE WITH ARCHITECTURAL AND STRUCTURAL PLANS FOR ROOF PENETRATIONS. SEAL PENETRATIONS PER ROOF MANUFACTURER'S RECOMMENDATIONS.
- F. ANY ADHESIVES USED ON ROOF SURFACES MUST BE APPROVED BY ROOF MANUFACTURER. DO NOT USE ANY PRODUCTS OR METHODS THAT VOID OR REDUCES ROOF WARRANTIES.
- G. WHERE RACEWAY OR CONDUCTORS ARE INSTALLED EXPOSED ON ROOF, DERATE AMPACITY OF CONDUCTORS IN ACCORDANCE WITH NEC.
- H. COORDINATE EQUIPMENT CONNECTIONS WITH MECHANICAL CONTRACTOR TO ENSURE THAT ROOF TOP EQUIPMENT IS CONNECTED TO THE LOAD CENTER AND INDOOR UNIT OF DWELLING UNIT WHICH IT IS SERVING. FIELD VERIFY EXACT REQUIREMENTS PRIOR TO ROUGH-IN.



POWER PLAN - BLDG 5 - ROOF
SCALE: 1/8" = 1'-0"



737 South Third Street, Lenoirville, Kentucky 40202-2100
502.885.4181 502.897.0488 Fax www.luckettfarley.com
Master Planning | Architecture | Engineering | Interior Design
Design Build | Building Commissioning | Special Inspections

ARCHITECTURAL FIRM LICENSE NUMBER: 5088
ENGINEERING FIRM LICENSE NUMBER: E-0287
Luckett & Farley
© 2018



Academic Privatization
Rivers Walk
178 S. WATERS ST., BOONE, NC 28607

Date	Description

DATE	2017.021
MADE BY	RMT
CHECKED BY	RMT
DATE	12/19/2018
POWER PLAN - BUILDING 5 - ROOF	
DRAWING NO.	2-E2.5.7