

# GENERAL NOTES

ALL WORK SHALL BE PERFORMED IN COMPLIANCE WITH ALL LOCAL, STATE AND FEDERAL CODES.

THESE DRAWINGS ARE A GENERAL GUIDE AND DO NOT REFLECT SPECIFIC SITE LAYOUTS OR CONDITIONS. REFER TO THE SITE PLAN AND SCOPE OF WORK FOR SITE SPECIFIC INFORMATION. THESE DRAWINGS DO NOT FREE THE CONTRACTOR OF THE RESPONSIBILITIES IN THE SCOPE OF WORK.

THE CONTRACTOR SHALL NOT SCALE THE DRAWINGS; STATED DIMENSIONS SHALL GOVERN. SHOULD THE CONTRACTOR HAVE ANY QUESTIONS ABOUT ANY INFORMATION ON THE DRAWINGS, HE SHALL BE RESPONSIBLE FOR CONTACTING THE PETROLEUM FOREMAN FOR CLARIFICATION PRIOR TO PROCEEDING WITH THE WORK.

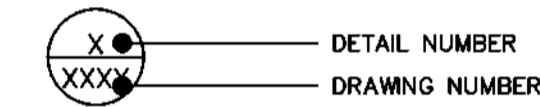
# CONTACTS

SHEETZ PETROLEUM PROJECT MANAGER:  
DENVER BRYDON: (814) 239-1193 OFFICE  
(814) 414-5976 CELL

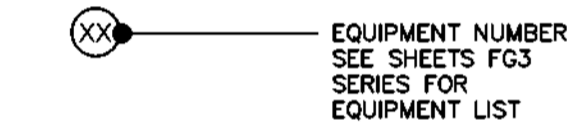
SHEETZ WAREHOUSE  
351 SHEETZ WAY  
CLAYSBURG, PA 16625

# LEGEND

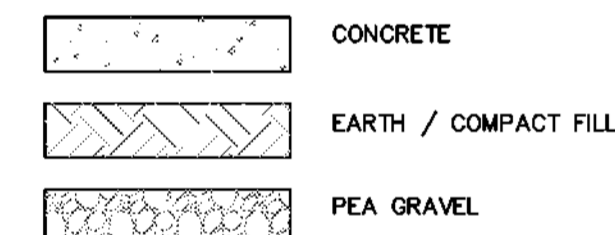
### DETAIL REFERENCE



### EQUIPMENT REFERENCE



### MATERIAL SYMBOLS



### COMMON ABBREVIATIONS

- C.L. CENTER LINE
- MFR. MANUFACTURER
- NPT NATIONAL PIPE THREAD
- REQ. REQUIRED
- TYP. TYPICAL
- UST(S) UNDERGROUND STORAGE TANK(S)
- FRP FIBERGLASS REINFORCED PLASTIC

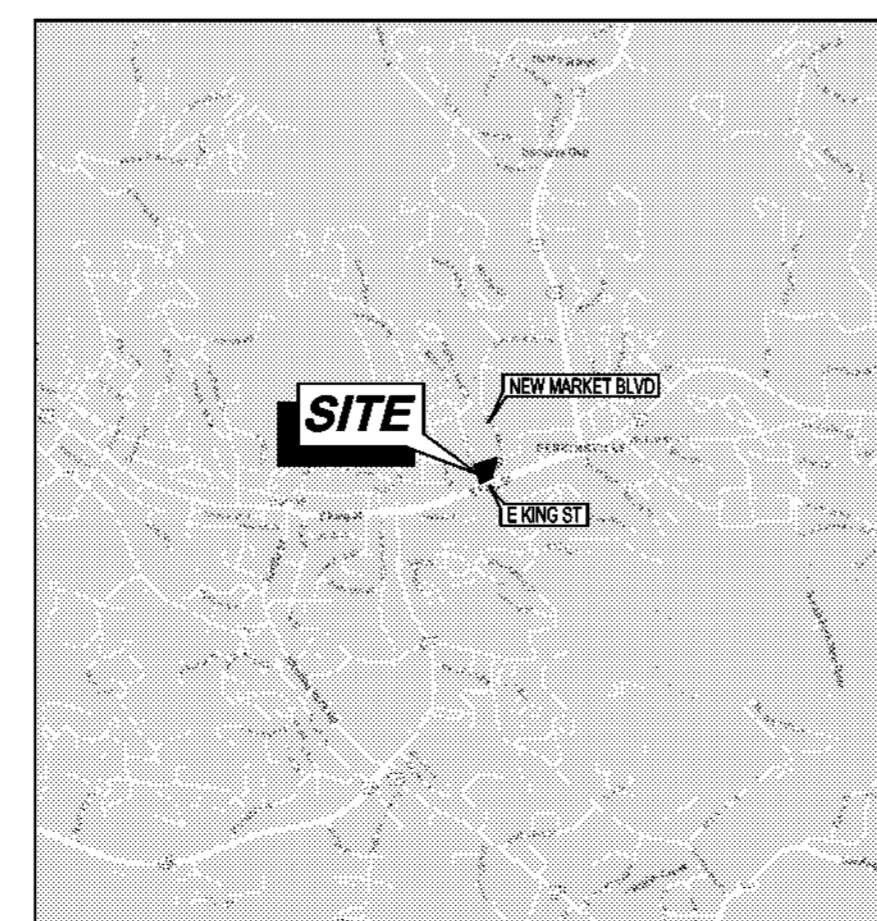


**SHEETZ, INCORPORATED**  
**5700 SIXTH AVENUE**  
**ALTOONA, PA 16602**  
**(814) 946-3611**

# UNDERGROUND STORAGE TANK SYSTEM INSTALLATION DRAWINGS

# SHEETZ #8xx "BOONE (NEW MARKET)" INTERSECTION OF NEW MARKERT BLVD & CHESTNUT DR BOONE, NC 28607 WATAUGA COUNTY

## LOCATION MAP ONE CALL



CALL UNDERGROUND SERVICE ALERT

NOT LESS THAN THREE (3) WORKING DAYS BEFORE YOU DIG CALL NORTH CAROLINA 811 AT 1.800.632.4949 OR DIAL "811" IF YOU WITHIN NORTH CAROLINA.

### BASE BACKGROUND PLANS PROVIDED BY:

LESD PROFESSIONALS, P.C.  
RIVER RUN EXECUTIVE OFFICES  
SUITE-B  
110 EXCHANGE STREET  
DANVILLE, VA 24541  
434.792.3680

## INDEX OF DRAWINGS

SHEET #	SHEET TITLE	DATE
FG1.0	TITLE SHEET	8/11/2023
FG2.0	SCOPE OF WORK (PART 1)	8/11/2023
FG2.1	SCOPE OF WORK (PART 2)	8/11/2023
FG2.2	SCOPE OF WORK (PART 3)	8/11/2023
FG3.0	EQUIPMENT LIST (PART 1)	8/11/2023
FG3.1	EQUIPMENT LIST (PART 2)	8/11/2023
F.O.	FACILITIES AND OPERATIONS PLAN	8/11/2023
FT1.0	FUEL PIPING PLAN	8/11/2023
FT1.1	HAZARDOUS AREAS CLASSIFICATION SITE PLAN	8/11/2023
FT1.2	HAZARDOUS AREAS CLASSIFICATION DETAILS	8/11/2023
FT2.0	CONCRETE SPECIFICATIONS AND DETAILS	8/11/2023
FT3.0	CONCRETE CONTROL JOINT LAYOUT AND TANK LAYOUT DETAILS	8/11/2023
FT4.0	TANK INSTALLATION DETAILS	8/11/2023
FT4.1	3D TANK LAYOUT DETAIL	8/11/2023
FT6.0	TANK SUMP DETAILS	8/11/2023
FT6.1	TANK SUMP DETAILS	8/11/2023
FT6.2	SIPHON MANIFOLD DETAILS	8/11/2023
FT7.0	FUEL SYSTEM ACCESSORIES	8/11/2023
FD1.0	CANOPY COLUMN ANCILLARY DETAILS	8/11/2023
FD2.0	ENCORE (3-1+1) (E15) DISPENSER INSTALLATION	8/11/2023
FD2.1	ENCORE (3-1+1) (E85) DISPENSER INSTALLATION	8/11/2023
FD3.0	ENCORE (3+1+1) DISPENSER INSTALLATION	8/11/2023
FE1.0	CONDUIT ROUTING PLAN	8/11/2023
FE1.1	SUB SYSTEM CONDUIT PLAN	8/11/2023
FE2.0	CONDUIT SCHEDULE	8/11/2023
FE2.1	CANOPY LIGHTING SCHEME	8/11/2023
FE2.2	BACKROOM ELECTRICAL DETAILS & CONDUITS	8/11/2023
FE3.0	TYPICAL TLS-450 PLUS INSTALLATION	8/11/2023
FC1.0	CASHIER E-STOP & INTERCOM CONTROLLER LOCATION DETAIL	8/11/2023

### REFERENCE DRAWING INDEX

SHEET #	SHEET TITLE	DATE
FG4.0	WELL INFORMATION (PART 1)	8/11/2023
FG4.1	WELL INFORMATION (PART 2)	8/11/2023
FG4.2	WELL INFORMATION (PART 3)	8/11/2023
FG4.3	WELL INFORMATION (PART 4)	8/11/2023
FT3.3	FIBERLITE TANK SUMP MANUFACTURER INSTALLATION DETAILS	8/11/2023
FT8.0	OPW FLEXWORKS MANUFACTURER INSTALLATION DETAILS	8/11/2023
FT8.1	DUALOY 3000L CX MANUFACTURER INSTALLATION DETAILS	8/11/2023
FT8.2	DUALOY 3000L MANUFACTURER INSTALLATION DETAILS	8/11/2023
FE4.0	MANUFACTURER ELECTRICAL WIRING DETAILS	8/11/2023
FE5.0	MANUFACTURER ELECTRICAL WIRING DETAILS	8/11/2023
FE6.0	SQUARE D MANUFACTURER ELECTRICAL DRAWINGS	8/11/2023
FE6.1	SQUARE D MANUFACTURER ELECTRICAL DRAWINGS	8/11/2023
FE6.2	SQUARE D MANUFACTURER ELECTRICAL DRAWINGS	8/11/2023
FE6.3	SQUARE D MANUFACTURER ELECTRICAL DRAWINGS	8/11/2023
FE6.4	SQUARE D MANUFACTURER ELECTRICAL DRAWINGS	8/11/2023
FE6.5	SQUARE D MANUFACTURER ELECTRICAL DRAWINGS	8/11/2023

### NORTH CAROLINA TANK INSTALLATION SUMMARY

ITEM	DESCRIPTION	RESPONSE	COMMENT
1	PREPARED BY NC PE	YES	ROBERT W. WELLET REG #051785
	SCHEDULE OF MATERIALS	YES	SEE SHEET FG3.0, FG3.1
	TANKS	YES	SEE SHEET FT3.0, FT4.0
	PIPING	YES	SEE SHEET FT1.0, FT6.0, FT6.1, FT6.2
	LEAK DETECTION		SEE SHEET FT3.0, FT4.0, FT6.0, FT6.1, FT7.0, FD2.0, FD3.0, FE3.0
	SPILL PREVENTION		SEE SHEET FT6.0, FT6.1, FT7.0
	OVERFILL PREVENTION		SEE SHEET FT7.0
	VAPOR RECOVERY EQUIPMENT		SEE SHEET FT1.0, FT6.0, FT6.1, FT7.0
2	SCALED DRAWING (NO LARGER THAN 11" x 17") SHOWING THE FOLLOWING UST SYSTEM FEATURES		
A	NAME AND ADDRESS OF UST SYSTEM SITE		ON EACH SHEET
B	TANK SIZE AND METHOD OF ANCHORING (IF DEADMAN/BOTTOM OF HOLD-DOWN PAD IS USED)	DEADMEN	SEE SHEET FT4.0
B I	THE ENGINEERING STANDARD USED	PEIRP-100	SEE SHEET FT3.0
B II	THE DIAMETER IN FEET	SHOWN	SEE SHEET FT3.0
B III	THE CAPACITY IN GALLONS	SHOWN	SEE SHEET FT3.0
B IV	THE MATERIALS OF CONSTRUCTION OF THE INNER AND OUTER WALLS OF THE TANK INCLUDING COATINGS	DOUBLE WALL TANK BRINE FILLED	SEE SHEET FT3.0
C	PIPING LOCATION (INCLUDING VENT LINES)	INDICATED ON DRAWINGS	SEE SHEET FT1.0
C I	DEVICE OR METHOD USED TO ALLOW THE PIPING TO BE LOCATED AFTER IT IS BURIED	DETECT-A-TAPE	SEE SHEET FT6.0, FG3.0, FG3.1
D	DISPENSERS	GILBARCO	SEE SHEET FD2.0, FD3.0
E	LEAK DETECTION SYSTEM(S) WITH INTENDED MONITORING POINTS AND SENSOR LOCATIONS	VEEDER-ROOT TLS-450PLUS	SEE SHEET FT1.0, FT6.0, FT6.1, FT7.0, FE1.0, FE1.1, FE3.0
F	FLEXIBLE CONNECTOR LOCATIONS.	NOT SHOWN	NO FLEX CONNECTOR USED
G	IF THE EQUIPMENT HAS SINGLE-WALLED OR DOUBLE-WALLED CONSTRUCTION	DOUBLE-WALL	SEE SHEET FG3.0, FG3.1, FT3.0, FT4.0, FT6.0, FT6.1, FT6.2, FT6.3, FT6.4, FT6.5, FT6.6, FT6.7, FT6.8, FT6.9, FT6.10, FT6.11, FT6.12, FT6.13, FT6.14, FT6.15, FT6.16, FT6.17, FT6.18, FT6.19, FT6.20, FT6.21, FT6.22, FT6.23, FT6.24, FT6.25, FT6.26, FT6.27, FT6.28, FT6.29, FT6.30, FT6.31, FT6.32, FT6.33, FT6.34, FT6.35, FT6.36, FT6.37, FT6.38, FT6.39, FT6.40, FT6.41, FT6.42, FT6.43, FT6.44, FT6.45, FT6.46, FT6.47, FT6.48, FT6.49, FT6.50, FT6.51, FT6.52, FT6.53, FT6.54, FT6.55, FT6.56, FT6.57, FT6.58, FT6.59, FT6.60, FT6.61, FT6.62, FT6.63, FT6.64, FT6.65, FT6.66, FT6.67, FT6.68, FT6.69, FT6.70, FT6.71, FT6.72, FT6.73, FT6.74, FT6.75, FT6.76, FT6.77, FT6.78, FT6.79, FT6.80, FT6.81, FT6.82, FT6.83, FT6.84, FT6.85, FT6.86, FT6.87, FT6.88, FT6.89, FT6.90, FT6.91, FT6.92, FT6.93, FT6.94, FT6.95, FT6.96, FT6.97, FT6.98, FT6.99, FT6.100
H	VAPOR RECOVERY.	YES	SEE SHEET FT1.0, FT6.0, FT6.1, FT7.0
I	CONTAINMENT SUMPS.	PROVIDED	SEE SHEET FT1.0, FT6.0, FT6.1, FT7.0
J	OVERFILL PREVENTION AND SPILL CONTAINMENT EQUIPMENT	PROVIDED	SEE SHEET FT7.0
K	ADJACENT ROADWAY	YES	SEE SHEET FG1.0, FT1.0
L	ONSITE STRUCTURES, UTILITIES AND MONITORING WELLS	YES	SEE SHEET FG1.0, FT1.0
M	ONSITE WATER SUPPLY WELLS	YES	SEE SHEET FG4 SERIES
3	IF THE UST SYSTEM WILL STORE AN ETHANOL BLEND OF GREATER THAN 10% OR A BIODI-DIESEL BLEND GREATER THAN 20% THEN YOU MUST ENSURE THE UST SYSTEM IN YOUR DESIGN WILL BE COMPATIBLE AFTER INSTALLATION YOU MUST COMPLETE A SUSTO20, ALTERNATIVE FUEL COMPATIBILITY CHECKLIST FORM AND SUBMIT WITH YOUR UST-46. APPLICATION TO INSTALL OR REPLACE UNDERGROUND STORAGE TANK SYSTEM (POST INSTALLATION FORM	YES	SEE FT1.0

ISSUED FOR	DATE	BY	ZJD	ZJD
ISSUED FOR OWNER REVIEW	08-07-23	ZJD		
ISSUED FOR PERMIT	08-11-23	ZJD		



**WJW**  
Engineers • Planners • Surveyors  
Wildcat, Claysburg, Pa. 16825  
5198 Beach Road • Middleburg, Ohio 44256  
T: 330.239.2669 • F: 330.239.0272

CONVENIENCE ARCHITECTURE  
AND DESIGN P.C.  
(814) 239-0613  
351 SHEETZ WAY, CLAYSBURG, PA 16625

SHEETZ INCORPORATED  
5700 SIXTH AVENUE  
ALTOONA,  
PENNSYLVANIA 16602  
(814) 946-3611

TITLE SHEET

SHEETZ INC. #8xx  
"BOONE (NEW MARKET)"  
INTERSECTION OF NEW MARKERT BLVD  
& CHESTNUT DR  
BOONE, NC 28607  
WATAUGA COUNTY

SCALE: N/A

DATE: 8/11/2023

DESIGNED BY: ZJD

DRAWN BY: ZJD

CHECKED BY: RWW

JOB NUMBER: 230710

FG1.0